

网站: [www.dfrobot.com.cn](http://www.dfrobot.com.cn)  
电话: 86-21-61620183  
技术支持: [Techsupport@dfrobot.com](mailto:Techsupport@dfrobot.com)  
地址: 上海市浦东新区秀浦路112号Y1座615室



© 本说明书最终解释权归DFRobot所有

Website: [www.dfrobot.com](http://www.dfrobot.com)  
Tel: 86-21-61620183  
Service: [Techsupport@dfrobot.com](mailto:Techsupport@dfrobot.com)  
Address: Rm. 615, Bldg Y1, NO.112, Liangxiu Rd., Pudong, China

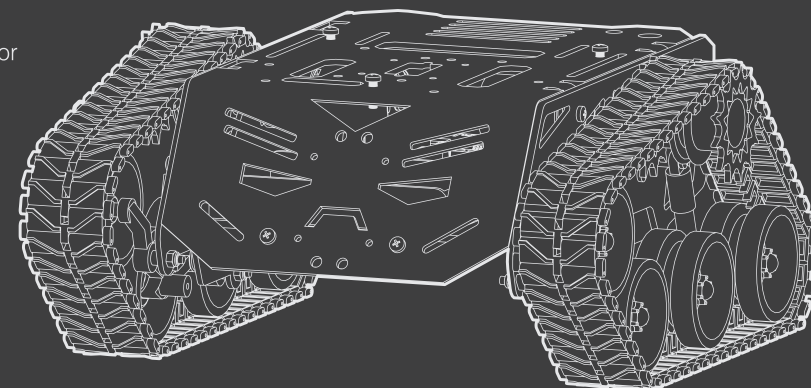


© DFRobot has the final authority of interpretation on this manual.

## DEVASTATOR

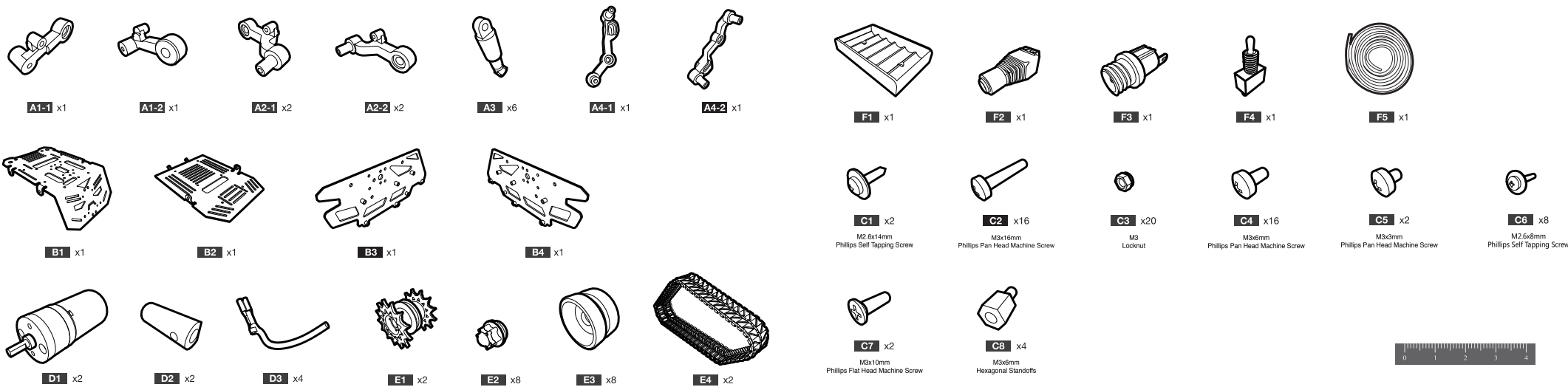
# Tank Mobile Platform Instrution Manual

Metal DC Gear Motor



Parts List

Parts List



Essential Tools

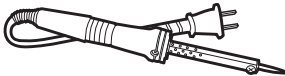


M3 Phillips Screwdriver

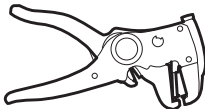


Small Cross Sleeve Wrench

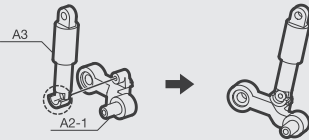
Selection Tool



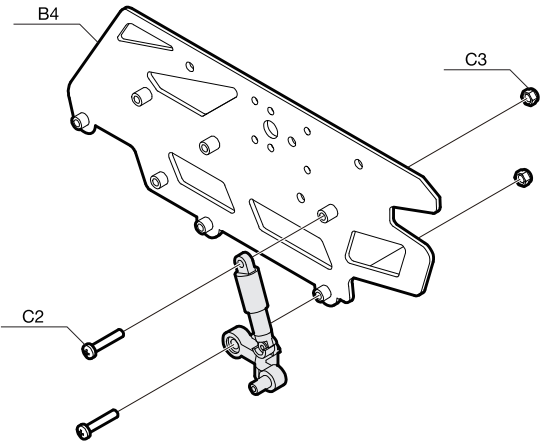
Soldering Iron



Wire Strippers

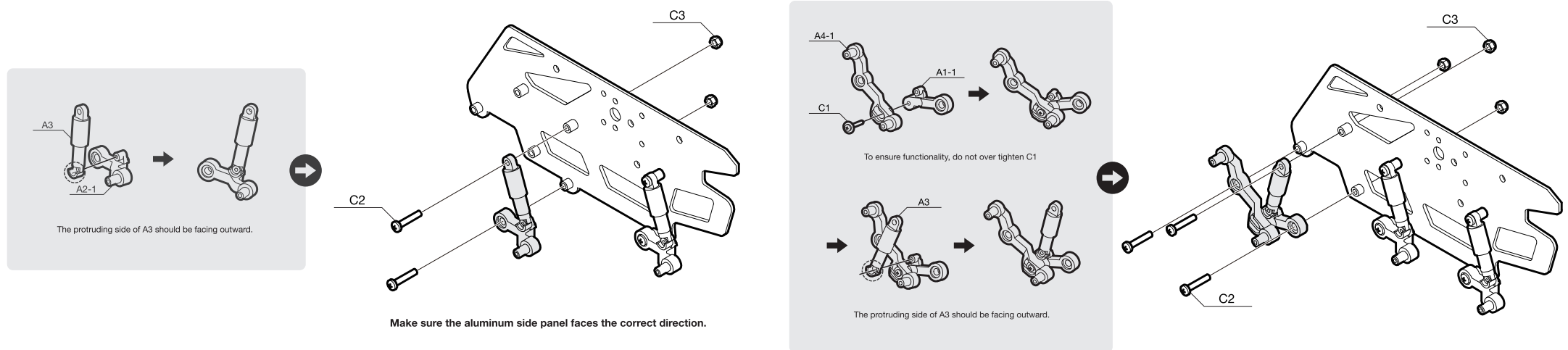


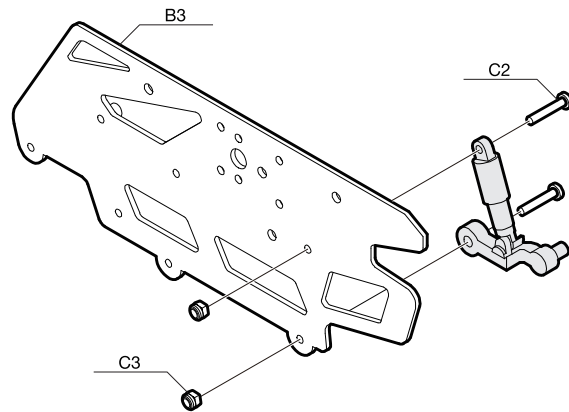
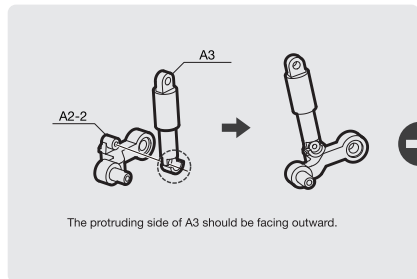
The protruding side of A3 should be facing outward.



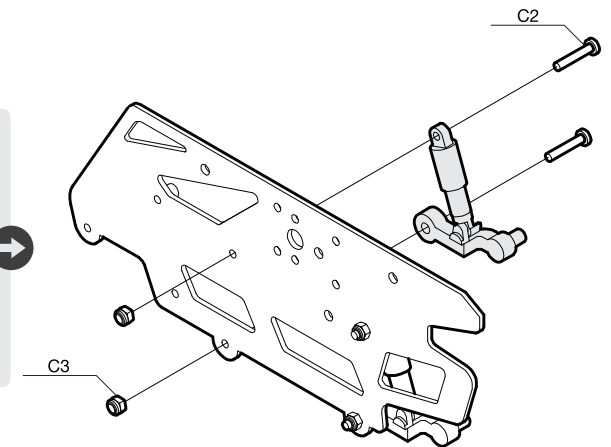
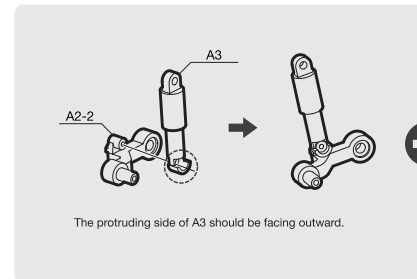
Make sure the aluminum side panel faces the correct direction.

**Note:** Tools and Batteries are not included.

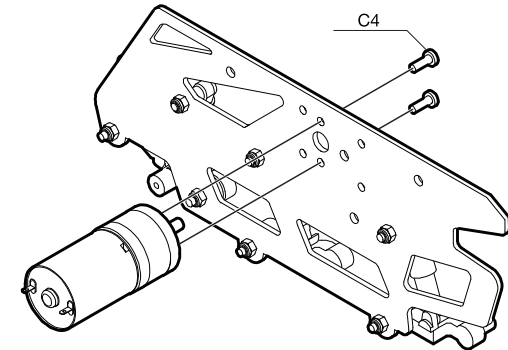
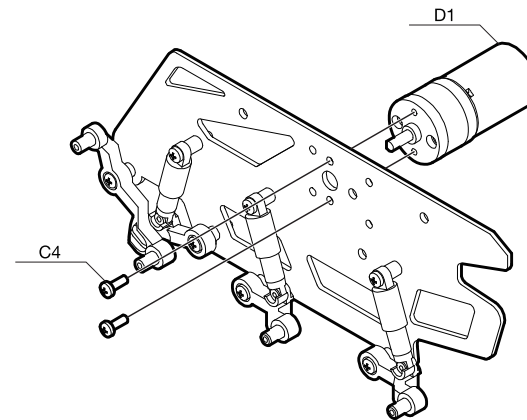
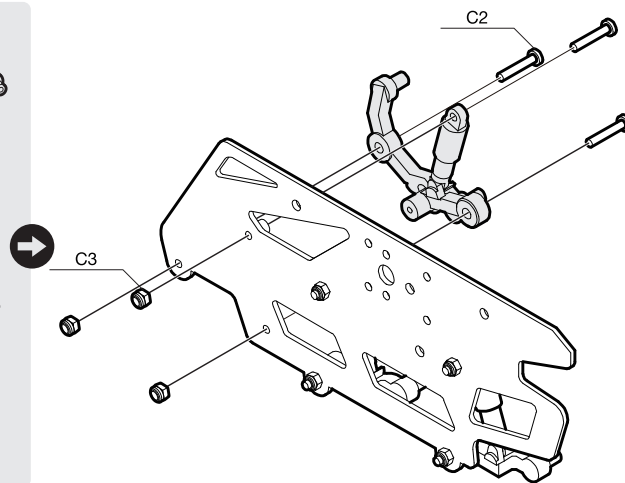
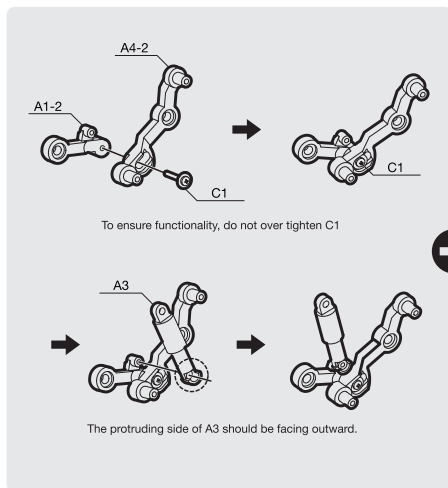




Make sure the aluminum side panel faces the correct direction.

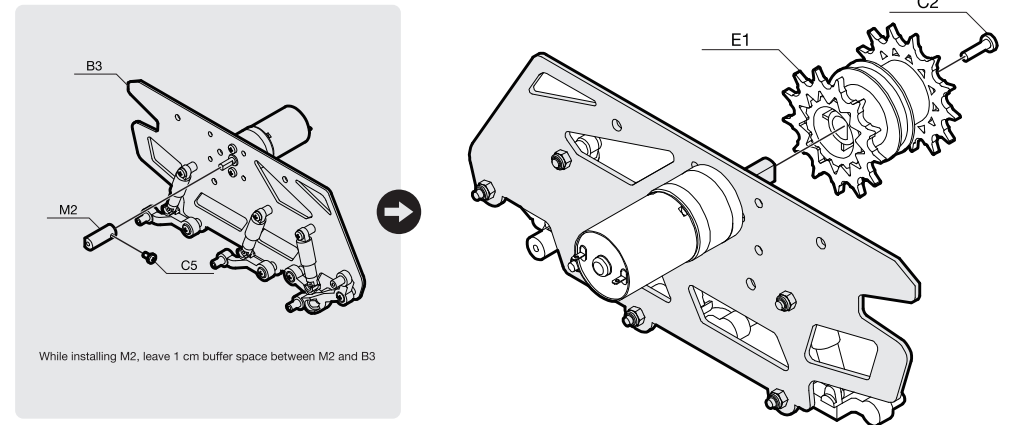
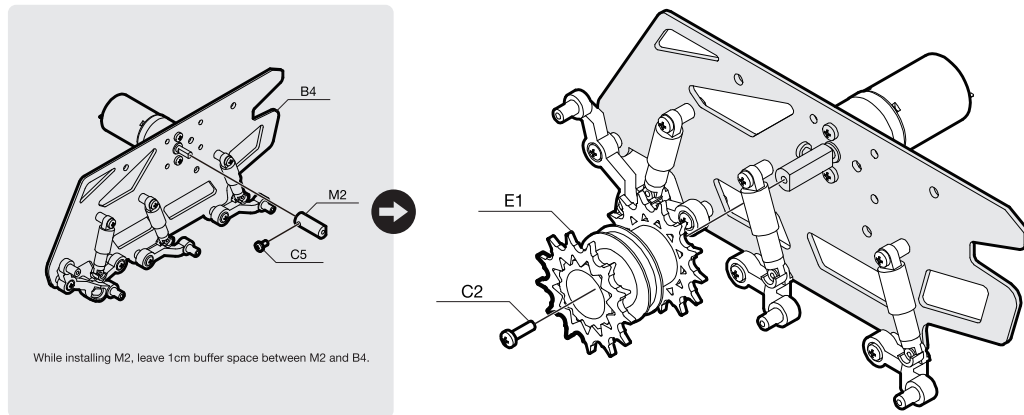


Make sure the aluminum side panel faces the correct direction.



## Assemble Wheels

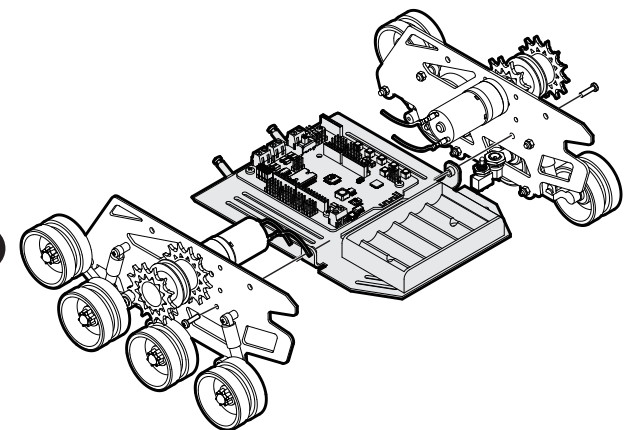
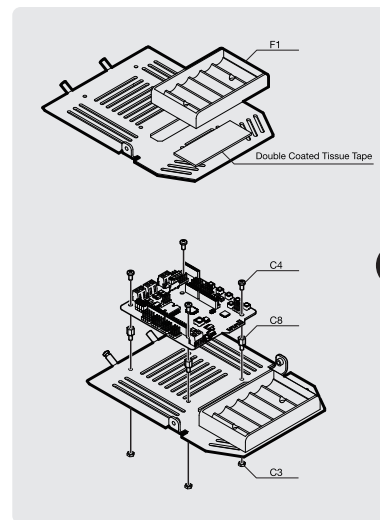
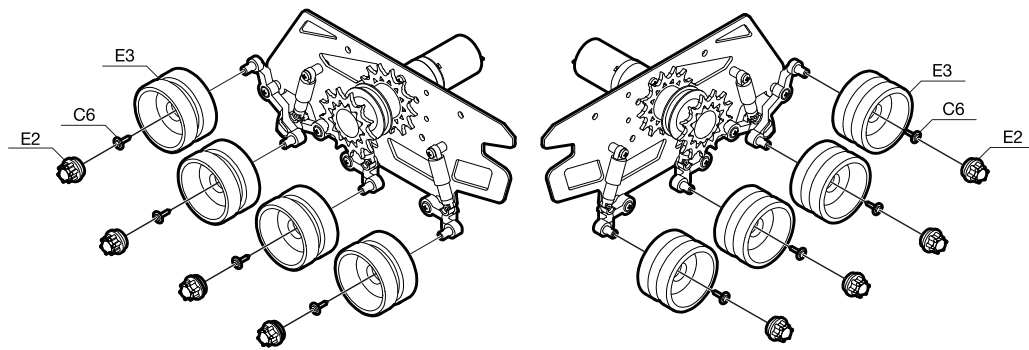
## Assemble Wheels



## Assemble Wheels

The circuit diagram provided in this instruction sheet is based on the Romeo BLE micro controller.

Electronics



Solder wire (F5) to motors. Connect to board via screw terminals.

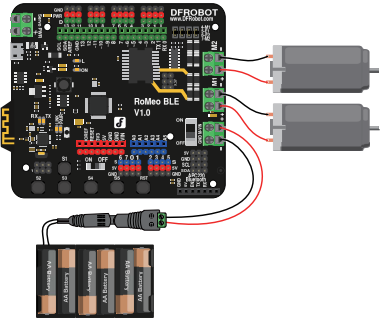


There are two options to power your device:

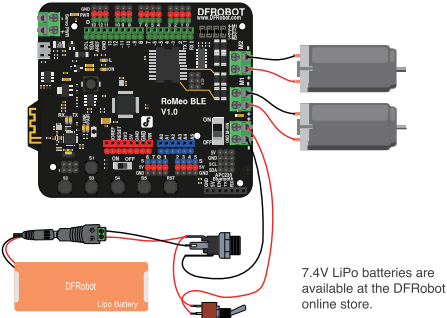
Electronics

Complete Assembly

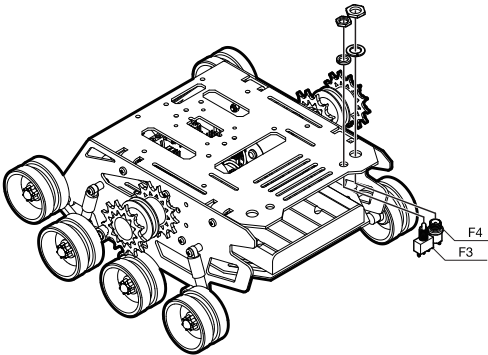
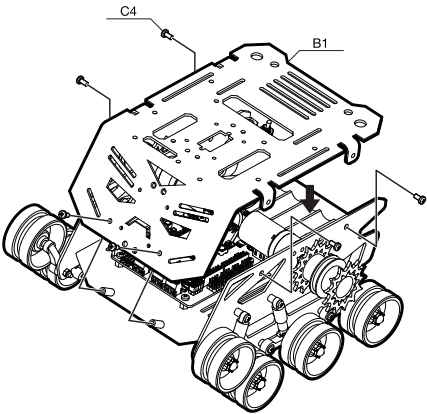
Option A: Battery holder power supply



Option B: Rechargeable battery power supply



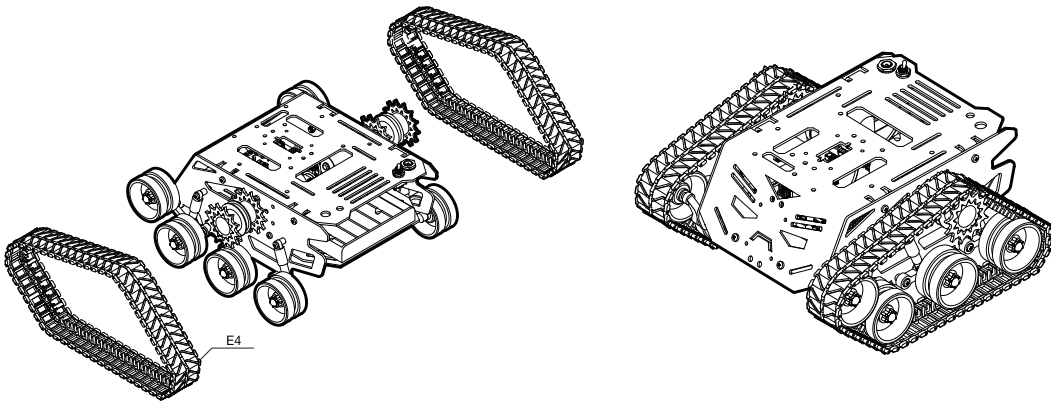
7.4V LiPo batteries are available at the DFRobot online store.



Refer to tutorials on DFRobot Wiki page for trouble shooting.  
<https://www.dfrobot.com/wiki>

ROB0128

Complete Assembly



Recommended Products

<b>Autonomous Obstacle Avoiding Robot</b>		
Romeo BLE Controller	(SKU: DFR0305)	X1
Goteck Micro Metal Gear Servo	(SKU: SER0011)	X1
URM37 Ultrasonic Sensor	(SKU: SEN0001)	X1
URM37 Ultrasonic Mounting Bracket	(SKU: FIT0006)	X1
<b>WiFi Monitoring Robot</b>		
Romeo BLE Controller	(SKU: DFR0305)	X1
Hexa Base Rotate KIT	(SKU: ROB0114)	X1
DSS-P05 Standard Servo	(SKU: SER0020)	X2
Pan and Tilt Kit	(SKU: FIT0004)	X1
URM37 Ultrasonic Sensor	(SKU: SEN0001)	X1
URM Ultrasonic Mounting Bracket	(SKU: FIT0006)	X1
2.4G WIFI Camera	(SKU: SEN0022)	X1
<b>Accessories</b>		
7.4V Lipo 2200mAh Battery	(SKU: FIT0137)	
Mounting Kit	(SKU: FIT0225)	
Jumper Wires 9" F/F	(SKU: FIT0030)	
Magnet Micro USB Cable	(SKU: FIT0351-OE)	

