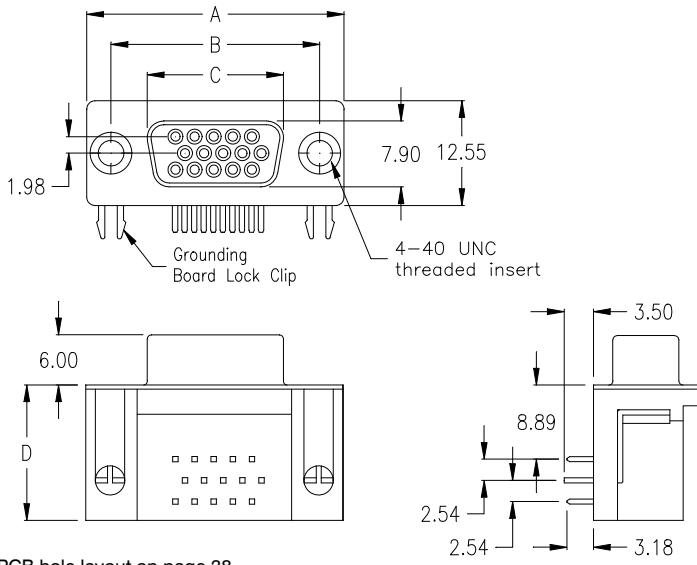
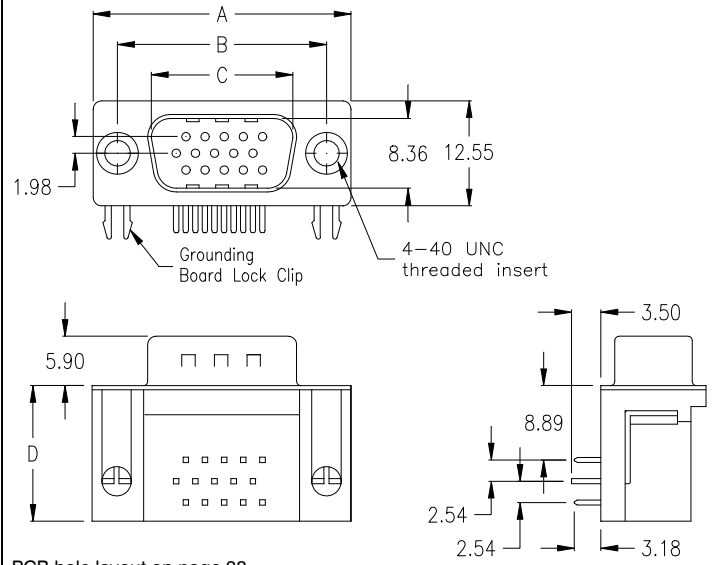


Female



PCB hole layout on page 38

male



PCB hole layout on page 38

No. of contacts	Dimension				Ordering Code
	A	B	C	D	
015	30.81	24.99	16.33	16.22	SHF-015-F900-55/ XX SHF-015-F900-95/V XX
	1.213	.984	.643	.639	
026	39.14	33.32	24.66	16.22	SHF-026-F900-55/ XX
	1.541	1.311	.971	.639	
044	53.04	47.04	38.38	16.22	SHF-044-F900-55/ XX
	2.088	1.852	1.511	.639	
062	69.32	63.50	54.84	16.22	SHF-062-F900-55/ XX
	2.729	2.500	2.159	.639	

Plating: **-55** = gold/gold (not available for VESA Type)
-95 = tin(leadfree)/gold

Option

No. of contacts	Dimension				Ordering Code
	A	B	C	D	
015	30.81	24.99	16.92	16.22	SHM-015-F900-55/ XX
	1.213	.984	.666	.639	
026	39.14	33.32	25.25	16.22	SHM-026-F900-55/ XX
	1.541	1.311	.994	.639	
044	53.04	47.04	38.96	16.22	SHM-044-F900-55/ XX
	2.088	1.852	1.534	.639	
062	69.32	63.50	55.42	16.22	SHM-062-F900-55/ XX
	2.729	2.500	2.182	.639	

Plating: **-55** = gold/gold
-95 = tin(leadfree)/gold (only on request)

Option

SHF - xxx - F900 - 95/V XX = VESA Type - blue colour insulator
Contact #9 recessed 1.27mm to allow last mate, first break on 5V supply

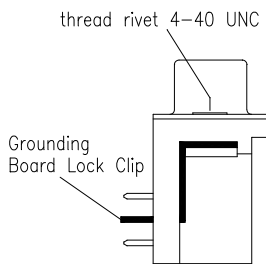
"Pin-In-Paste" Technology - for availability pls. contact info@e-tec.com

General Specification page 72

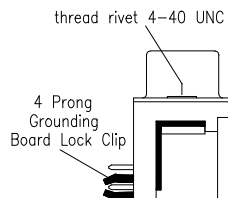
Options

Special product.

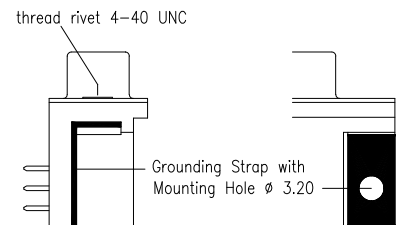
Please ask for availability and minimum order quantity before you consider the article for development, design in or production purposes.



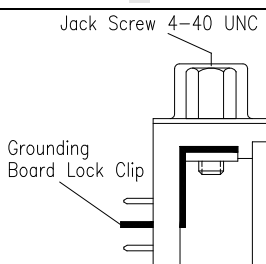
N



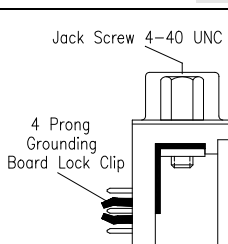
C4



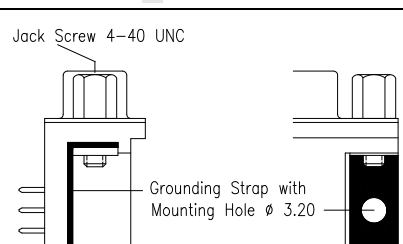
H not available with 78-contact



NJ



C4J



HJ not available with 78-contact