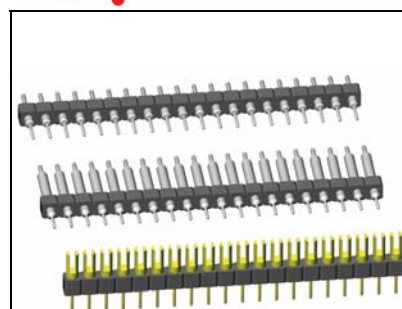
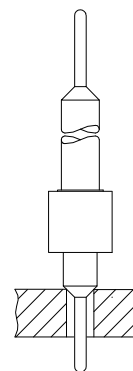
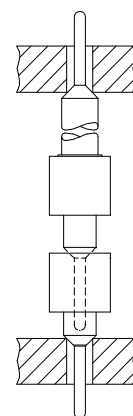


**Board to Board Terminals**

<p>077</p>	<p>057</p>	<p>037</p>
<p>058</p>	<p>059</p>	<p>056</p>
<p>542</p>	<p>038</p>	<p>353</p>
<p>036</p>	<p><b>Many other terminals and custom specific terminal styles are available on request, or refer to the pages 46 to 48 of this catalogue.</b></p>	

**Application Examples**Possible Terminals:

037; 056; 057; 058; 059  
077; 220; 542; 544  
562; 583; 770

Possible Terminals:

037; 056; 057; 058; 059  
077; 078; 542; 544  
562; 583; 770

**How to order**

**XXX - x xx - X xxx - xx**

**Series**

**SIB** = single-in-line strips.  
**DIS** = dual-in-line strips...  
**TIS** = triple-in-line strips..

**Rows**

.....**1**  
.....**2**  
.....**3**

**Nbr of contacts**

1-row = 02 to 40  
2-row = 04 to 80  
3-row = 06 to 96

**Insulator**

**S** = Plastic  
**E** = Epoxy FR4  
(TIS Series only)  
dimension see  
socket strip page 5

**Terminal style**

see drawings above  
or refer to pages 46 to 48  
of this catalogue for other  
types.

**Plating**

- **55** = gold  
- **99** = tin (leadfree)