

SIB Series
single-in-line Strips
breakable and solid insulator available

Unless otherwise specifically requested, the strips will be delivered either in solid or breakable plastic depending on availability of the insulator bodies.

"head flush"

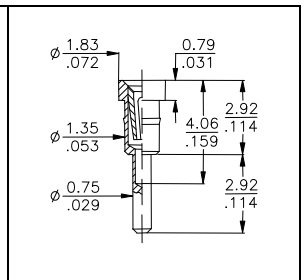
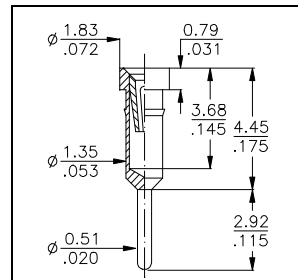
"head above"

SIB Series
Standard "head flush"
SIB-1xx-Fxxx-xx

Alternative: "head above"
SIB-1xx-Sxxx-xx

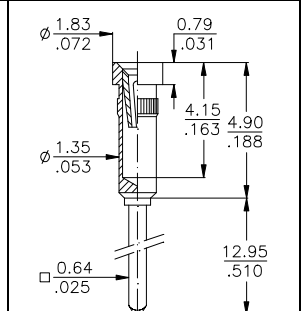
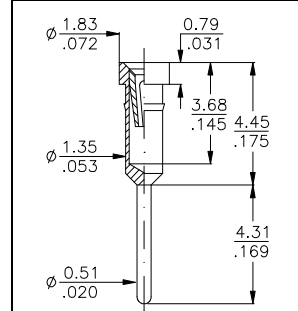
Number of contacts standard breakable sizes
20; 32 and 40

Number of contacts either breakable or solid available
from **02 to 40**



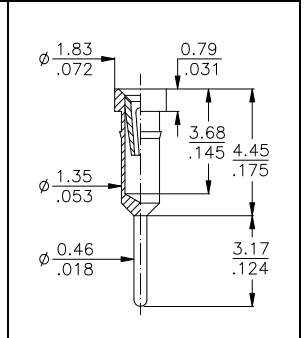
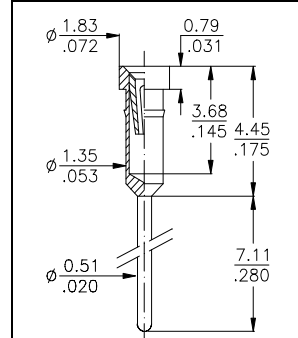
001 Standard terminal

047 Low profile terminal



008 long tail terminal

003 3-level w/w



009 extra long tail

010 Carrier terminal

DIS & TIS Series
dual and triple row 2,54mm grid

DIS Series
DIS-2xx-Fxxx-xx

Number of contacts available
from **04 to 80**

TIS Series
TIS-3xx-Exxx-xx

Number of contacts available
from **06 to 96**

Strips

Other lengths & pin-outs available on request.

Specifications

refer to page 49 of this catalogue

Terminals

For other terminal styles please refer to the pages 46 to 48 of this catalogue or contact your closest sales office.

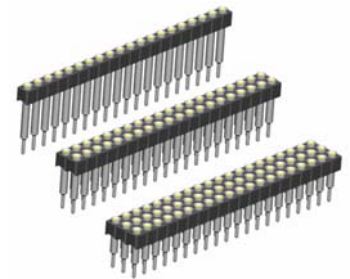
How to order

XXX - x xx - X xxx - xx

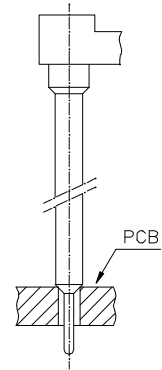
Series SIB = single-in-line strips DIS = dual-in-line strips... TIS = triple-in-line strips...	Rows 1 2 3	Nbr of contacts see above table	Insulator F = head flush S = head above E = Epoxy FR4 TIS Series only	Terminal style see drawings above or refer to pages 46 to 48 of this catalogue for other types.	Plating - 95 = tin/gold - 55 = gold/gold - 99 = tin/tin (tin is leadfree)
---	---	---	---	--	---

Board Stacker Terminals

<p>079</p>	<p>623</p>	<p>062</p>
<p>060</p>	<p>063</p>	<p>080</p>
<p>084</p>	<p>085</p>	<p>088</p>
<p>065</p>	<p>Many other terminals and custom specific terminal styles are available on request, or refer to the pages 46 to 48 of this catalogue.</p>	

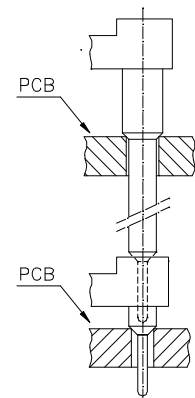


Application Examples



Possible Terminals:

060; 062; 063; 065; 079
080; 084; 085; 088; 623



Possible Terminals:

060; 062; 063; 079; 623

Specifications

See page 49 of this catalogue

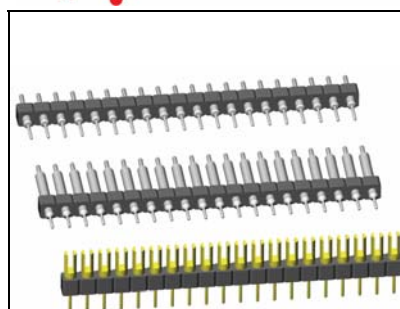
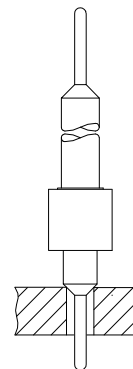
How to order

XXX - xxx - X xxx - 95

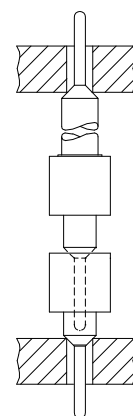
Series	Rows	Nbr of contacts	Insulator	Terminal style	Plating
SIB = single-in-line strips. 1				
DIS = dual-in-line strips... 2	1-row = 02 to 40	see socket strip	see drawings above	- 95 = tin/gold
TIS = triple-in-line strips.. 3	2-row = 04 to 80	page 5	or refer to pages 46 to 48 of this catalogue for other types.	(tin leadfree)
		3-row = 06 to 96			other on request

Board to Board Terminals

<p>077</p>	<p>057</p>	<p>037</p>
<p>058</p>	<p>059</p>	<p>056</p>
<p>542</p>	<p>038</p>	<p>353</p>
<p>036</p>	<p>Many other terminals and custom specific terminal styles are available on request, or refer to the pages 46 to 48 of this catalogue.</p>	

**Application Examples**Possible Terminals:

037; 056; 057; 058; 059
077; 220; 542; 544
562; 583; 770

Possible Terminals:

037; 056; 057; 058; 059
077; 078; 542; 544
562; 583; 770

How to order

XXX - x xx - X xxx - xx

Series

SIB = single-in-line strips.
DIS = dual-in-line strips...
TIS = triple-in-line strips..

Rows

.....**1**
.....**2**
.....**3**

Nbr of contacts

1-row = 02 to 40
2-row = 04 to 80
3-row = 06 to 96

Insulator

S = Plastic
E = Epoxy FR4
(TIS Series only)
dimension see
socket strip page 5

Terminal style

see drawings above
or refer to pages 46 to 48
of this catalogue for other
types.

Plating

- **55** = gold
- **99** = tin (leadfree)