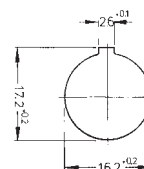


## Signal lamps with lamp socket - E 10 (MES), 16.2 mm



Pict.: red



Panel cut-out

### Technical Data

#### General information

Form of lens	round
Colour of lens	see order block
Diameter of collar	20 mm

#### Dimensions

Overall height	see order block
Mounting depth	see order block
Mounting hole	16.2 mm

#### Mechanical design

Mounting	ring nut
Terminals	see order block
Lamp socket	E 10
Lamp	filament lamp

#### Electrical characteristics

Voltage limit max.	250 V
Power limit max.	2 W

#### Other specifications

Degree of protection from front side	IP40
Weight	11 g

#### Approvals

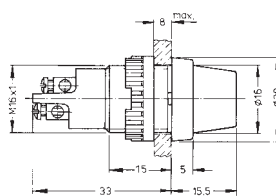


VDE 0710

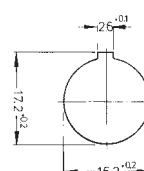
## Signal lamps with lamp socket - E 10 (MES), 16.2 mm, round lens



Pict.: red



screw terminals



Panel cut-out

With  
Socket

Voltage limit max.	Power limit max.	Terminals	Ref impulsion	Colour of lens	Order no. complete	Order no. single parts	
						Housing	Lens
250 V	2 W	screw terminals nickel-plated	201009	transparent colourless	<b>1.60.502.102/1002</b>	1.60.502.091/0000	5.49.205.013/1002
250 V	2 W	screw terminals nickel-plated	201002	transparent red	<b>1.60.502.102/1301</b>	1.60.502.091/0000	5.49.205.013/1301
250 V	2 W	screw terminals nickel-plated	201004	transparent yellow	<b>1.60.502.102/1402</b>	1.60.502.091/0000	5.49.205.013/1402
250 V	2 W	screw terminals nickel-plated	201005	transparent green	<b>1.60.502.102/1502</b>	1.60.502.091/0000	5.49.205.013/1502
250 V	2 W	screw terminals nickel-plated	201006	transparent blue	<b>1.60.502.102/1601</b>	1.60.502.091/0000	5.49.205.013/1601