

CREALITY

CREATE REALITY ACHIEVE DREAMS



48 rue Antoine de LAVOISIER - B.P. 45 - Z.I de la Sphère
14202 HEROUVILLE SAINT CLAIR cedex
Tél. 02 31 47 53 88 • Fax : 02 31 47 36 80
contact@limpulsion.fr

www.limpulsion.fr

▲ vente de composants - mesure - outillage - bureau d'études

3D PRINTING INDUSTRY EVANGELIST

ENTERPRISE BROCHURE



48 rue Antoine de LAVOISIER - B.P. 45 - Z.I de la Sphère
14202 HEROUVILLE SAINT CLAIR cedex
Tél. 02 31 47 53 88 • Fax : 02 31 47 36 80
contact@limpulsion.fr

www.limpulsion.fr

▲ vente de composants - mesure - outillage - bureau d'études

SHENZHEN CREALITY 3D TECHNOLOGY CO., LTD.

11F & 12F, JinChengYuan,Tongsheng Community,
Dalang,Longhua District,Shenzhen,China,518109

Official Website: www.crealty3d.cn

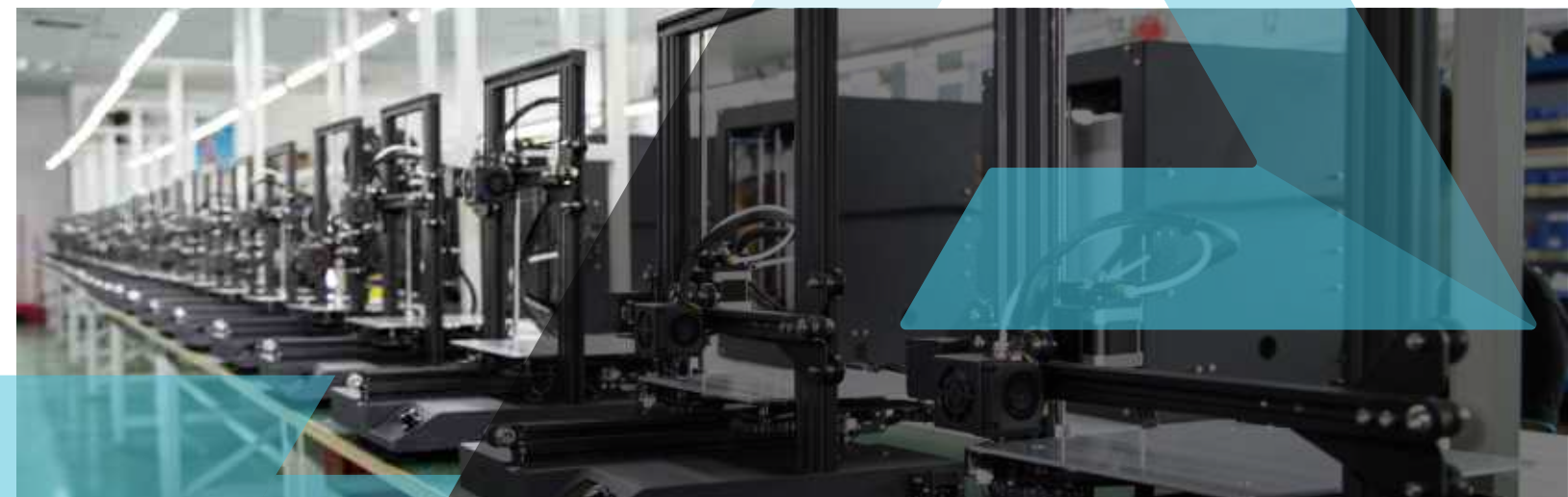
Tel: +86 755-85234565

Inquiry email: info@creality3d.cn

Technical support email: cs@creality3d.cn



Website QR code



SHENZHEN CREALITY 3D TECHNOLOGY CO., LTD.

ENTERPRISE INTRODUCTION

Shenzhen Creality 3D Technology Co., Ltd, founded in June 2014, which is a high-tech enterprise specializing in the production and sales of 3D printers, totally more than 20 products, fully meets the needs of different users such as individuals,families,schools.

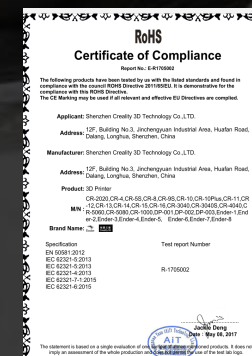
Our company headquartered in Shenzhen, with a number of branches in Dongguan, Wuhan, Shanghai, Beijing and many other locations, totally covers an area of 20,000 square meters and 16 modern production lines with a total of 550 employees, including more than 30 people in R&D department, 20 software and electronic engineers and 10 people are devoted to structure. At the same time, 4 professional test lines are continuously operated for 24 hours, in line with the company's advanced quality control system, ensuring the high quality of products. Our monthly production capacity is about 50,000pcs. The products have passed many international quality and environmental certifications UL, ISO9001, CE/FCC/ROHS, RCM, KC, PSE etc(noted some certifications can only be used on some countries) and we export to Europe, the United States, Australia, Russia, and the United Kingdom ,Germany, Singapore, Egypt, India more than 30 countries. In the future, Creality3d will keep passing on the spirit of the evangelist, making high quality 3d printers and providing best service, facilitating people to enjoy the convenience of technology.

BRANDING

PRODUCE HIGH
QUALITY 3D PRINTERS



CORPORATE HONORS



DIRECTORY

CP-01	2
CP-500	3
CR-10 V2	4
CR-10S Pro	5
CR-10 Max	6
CR-10 series	7
CR-X	8
CR20 Pro	9
CR20	10
Ender-3 Pro	11
Ender-3	12
Ender-5 Plus	13
Ender-5	14
CR-100	15
LD-002	16
DP-002	17
CR-5S	18
CR-5	19
CR-2020	20
CR-3040S	21
CR-3040	21
CR-4040	21
CR-5060	21
CR-5080	21
Spare parts	22
Filaments	23



CP-01

- 3D printing:
- Molding size: 200*200*200mm
Molding technology: FDM
File format: STL, OBJ, AMF
Slicing software: Cura, Simplify3D
- Laser engraving:
- Engraving size: 200*200mm
File format: SVG, BMP, NG, PG, DXF
Supported filament: wood, paper, plastic, leather, etc.
- CNC engraving:
- Carving/cutting size: 200*200mm
File format: SVG, BMP, NG, PG, DXF
Standard cutter size: HRC55 tungsten steel milling cutter 4F 4*1
Supported filament: wood, paper, PCB, plastic, etc.
- Basic parameters:
- Touch screen: 4.3 inch
Working mode: online or TF card offline
Power supply: input: 100-240V AC output: 24V 480W

Specification

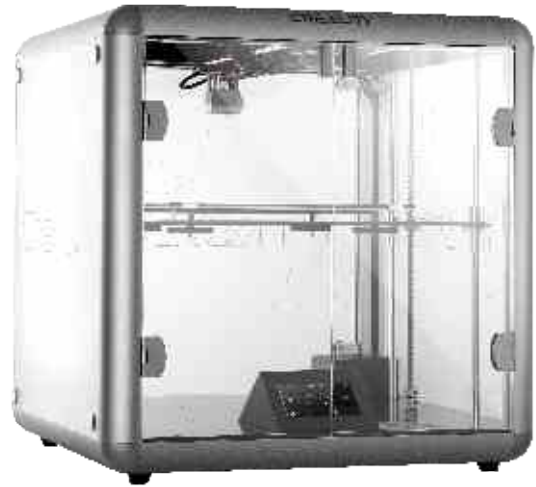
N.W.:	10KG	G.W.:	11.5KG
Machine Size:	440*340*535mm	Package Size:	630*465*250mm

Details Display



Features

- Versatility: Strong combination of 3D printing, CNC cutting, laser engraving brings you different operation experience.
- Large molding size: 200*200*200mm, Huge measurement inspires innovative artworks in different scenarios.
- Easy assembly: Exchangeable and universal modules can be assembly quickly. There is much space for transformation. You can replace modular machine head by twisting it with hands for 30s.
- Mean Well power supply: High-quality power supply with wide voltage is safe and secure by adopting proven technologies. Auto adaptive stable voltage brings about convenience.
- Resume printing: Automatically save printing records after power-off, continue printing after power-on for a higher model printing success rate.
- High precision: Precise 3D printing model without laminated striation. Smooth CNC cutting model with a flat surface. Laser engraving with slight positioning deviation and for exquisite models.



CP-500

Molding Tech:	FDM(Fused Deposition Molding)
Printing Size:	320*300*350mm
Printing Speed:	≤100mm/s
Precision:	±0.1mm
Slice Thickness:	0.1mm-0.4mm
Nozzle Diameter:	Standard 0.4mm,can be in 0.2,0.3mm
Filament:	1.75mm,PLA,ABS,TPU,wood, gradient color, carbon fiber, etc
Bed Temp:	≤100°C
Working Mode:	Online or TF card offline
File Format:	STL,OBJ,AMF
Slice Software:	Cura,Repetier-Host,Simplify 3D
Power Supply:	AC input 100V-240V,DC output 24V 500W

Specification

N.W.:	29.7KG	G.W.:	35.7KG
Machine Size:	560*560*575mm	Package Size:	660*660*410mm

Details Display



Features

- Assembled Design: Integrated cubicle appearance, neat and exquisite; full metal body, safe and stable.
- Huge Printing Size: 320X300X350mm for great creativity, suitable for academies and enterprises.
- Z axis dual polished rod: We choose polished rod that has wide pitch to increase friction and boost carrying capacity.Able to bear the weight of one person and effectively reduce errors and refine the prints.
- Meanwell Power Supply: High quality and wide voltage power supply. Mature technology ensures safety, automatic voltage stabilization, and convenient use.
- Ultra-silence Printing: Independently developed motherboard, ultra-silent motion brings low noise printing process.
- Resume Printing: Automatically reserved printing record after power off increases success rate of model printing.
- High Precision: Assemble machine with double mercerized rods achieves high stability and high precision.



CR-10 V2

Molding Tech:	FDM(Fused Deposition Molding)
Printing Size:	300*300*400mm
Printing Speed:	≤100mm/s
Precision:	±0.1mm
Slice Thickness:	0.1mm-0.4mm
Nozzle Diameter:	Standard 0.4mm,can be in 0.2,0.3mm
Filament:	1.75mm,PLA,ABS,TPU,wood, gradient color, carbon fiber, etc
Bed Temp:	≤100°C
Working Mode:	Online or TF card offline
File Format:	STL,OBJ,AMF
Slice Software:	Cura,Repetier-Host,Simplify 3D
Power Supply:	AC input 115/230V,DC output 24V 330W

Specification

N.W.:	11.5KG	G.W.:	14.5KG
Machine Size:	500*560*650mm	Package Size:	655*545*325mm

Details Display



Features

- Two-way Cooling Fans: Innovative two-way cooling fans dissipates heat in no time and drives away heat more evenly and promotes aperture precision.
- Noise-mute Drive: Upgraded system matches with self-researched motherboard and TMC2208 ultra-mute drive, performing stable and producing no noises.
- 350W Mean Well Quality Power Supply: Upgraded 24V/350W Mean Well power supply has a stable supplying ability and further enhances printing firmness.
- Switch between Near/Far-end Extrusion: Support switching far-end extruding unit into Titan near-end extruding unit, which is flexible.
- BL-TOUCH Auto Leveling Supportive: Machine reserves BL-TOUCH Auto Leveling Frame, which is fun to assemble it on your own.
- Resume after Power-on Breakage Inspection: Auto pend the print when a material breakage is detected. Auto resume the print when the power is on after a power outage occurs.



CR-10S Pro

Molding Tech:	FDM(Fused Deposition Molding)
Printing Size:	300*300*400mm
Printing Speed:	≤100mm/s
Precision:	±0.1mm
Slice Thickness:	0.1mm-0.4mm
Nozzle Diameter:	Standard 0.4mm,can be in 0.2,0.3mm
Filament:	1.75mm,PLA,ABS,TPU,wood, gradientcolor, carbon fiber, etc
Bed Temp:	≤100°C
Working Mode:	Online or TF card offline
File Format:	STL,OBJ,AMF
Slice Software:	Cura,Repetier-Host,Simplify 3D
Power Supply:	AC input 100-240V,DC output 24V 480W

Specification

N.W.:	13.9KG	G.W.:	17.5KG
Machine Size:	550*490*650mm	Package Size:	670*555*375mm

Details Display



Features

- Matrix automatic leveling: Dynamic leveling fill gaps, single-point fix gaps in time, only need to level the platform once with both automatic leveling and auxiliary leveling modes.
- Imported Teflon tube :Imported blue Teflon tube with high temperature resistant makes the feeding smoother while the printing quality is guaranteed.
- High-quality extrusion mechanism: Double-gear extrusion mechanism, higher extrusion force, ensuring smoothly feed-in.
- Single-row cable design: The cable is integrated with the 30P simple horn, no complicated wiring hassle the complex wiring. The 30P head adapter plate is used for automatic leveling, filament sensor, double extrusion, and PT100/NTC functions.
- Z-axis double screw: Good synchronization, move more smoothly with higher precision.



CR-10 Max

Molding Tech:	FDM(Fused Deposition Molding)
Printing Size:	450*450*470mm
Precision:	±0.1mm
Slice Thickness:	0.1mm-0.4mm
Nozzle Diameter:	Standard 0.4mm,can be in 0.8mm
Filament:	1.75mm,PLA,ABS,TPU,wood, gradient color, carbon fiber, etc
Bed Temp:	≤100°C
Working Mode:	Online or TF card offline
File Format:	STL,OBJ,AMF
Slice Software:	Cura, Simplify3D
Machine power:	750W
Power Supply:	Motherboard 75W, 24V, input: 100-240V AC, output: 24V Hotbed 750W, 24V, input: 100-240V AC, output: 24V

Specification

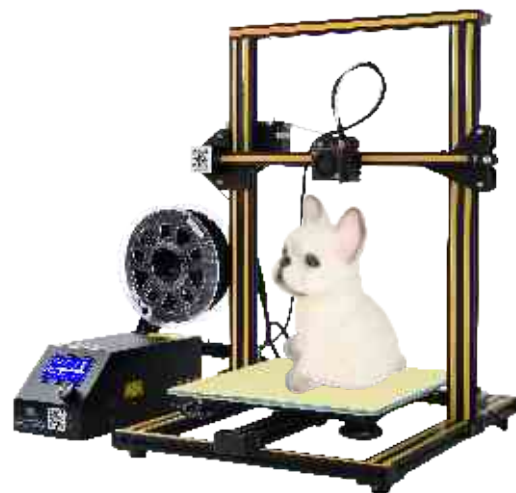
N.W.:	20KG	G.W.:	24.8KG
Machine Size:	650*785*735mm	Package Size:	735*735*305mm

Details Display



Features

- Super-large size: 450*450*470 mm super-large molding size to meet diverse printing requirements.
- Smooth feeding: BONDTECH gear extrusion structure, double drive gears for a strong thrust with exceptional extrusion and feeding performance.
- Automatic leveling: Imported BL Touch 16 point fast leveling.
- Two power supplies with wide voltage: Two power supplies for motherboard and hotbed by way of two-way output, sync power supply for quick response and stable operation.
- Filament detector: Automatic suspend when materials run out, break up or run into other abnormalities, energy saving and less costly.
- Stable structure: Delta structure to reduce Z-axis vibration for large-size and high precision printing.
- Resume printing function: Automatically save printing records, continue printing after power-on for a high model printing success rate.



CR-10S

Printing Size 300*300*400mm
Package Size: 640*530*285mm
G.W.: 14.8KG



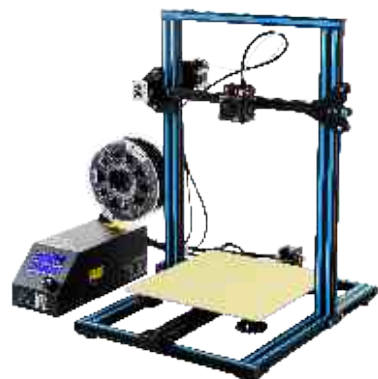
CR-10 S4

Printing Size 400*400*400mm
Package Size: 735*620*290mm
G.W.: 17.8KG



CR-10 S5

Printing Size 500*500*500mm
Package Size: 835*740*300mm
G.W.: 22.6KG



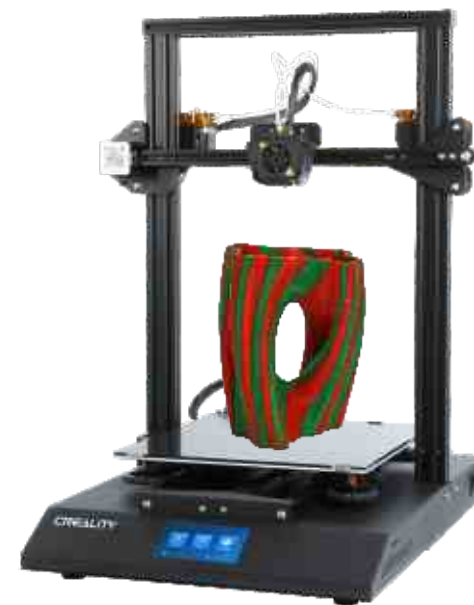
CR-10

Printing Size 300*300*400mm
Package Size: 640*530*285mm
G.W.: 13.9KG



CR-10mini

Printing Size 300*220*300mm
Package Size: 550*530*250mm
G.W.: 11.3KG



CR-X

Molding Tech:	FDM(Fused Deposition Molding)
Printing Size:	300*300*400mm
Printing Speed:	≤100mm/s
Precision:	±0.1mm
Slice Thickness:	0.1mm-0.4mm
Nozzle Diameter:	Standard 0.4mm, can be in 0.2, 0.3mm
Filament:	1.75mm, PLA, ABS, TPU, wood, gradient color, carbon fiber, etc
Bed Temp:	≤100°C
Working Mode:	Online or TF card offline
File Format:	STL, OBJ, AMF
Slice Software:	Cura, Repetier-Host, Simplify 3D
Power Supply:	AC input 100-240V, DC output 24V 480W

Specification

N.W.:	14.3KG	G.W.:	19.9KG
Machine Size:	550*490*650mm	Package Size:	635*540*335mm

Details Display



Features

- Two-color printing: Double-injection and one-out nozzle design. Two filaments, two extruders, one nozzle.
- Integrated design: The exterior design of the profiled sheet metal enclosure is used to protect most of the electronic components bottom case.
- 4.3-inch colorful touch screen: User-friendly UI design, with sound prompts, perfect human-machine dialogue function, to bring users an unprecedented smart operating experience.
- Carboly silicon printing platform: No need to use glue, perfect bonding with filaments at 60°C. Reduce adhesion after cooling, the model and platform are easy to separate, and the model is easy to remove.
- larger power supply: use well-known Mean Well large power supply, only needs 6 minutes to heat the hot bed to 100°C.



CR20 Pro

Molding Tech:	FDM(Fused Deposition Molding)
Printing Size:	220*220*250mm
Printing Speed:	≤100mm/s
Precision:	±0.1mm
Slice Thickness:	0.1mm-0.4mm
Nozzle Diameter:	Standard 0.4mm,can be in 0.2,0.3mm
Filament:	1.75mm,PLA,ABS,TPU,wood, gradient color, carbon fiber, etc
Bed Temp:	≤100°C
Working Mode:	Online or TF card offline
File Format:	STL,OBJ,AMF
Slice Software:	Cura,Repetier-Host,Simplify 3D
Power Supply:	AC input 115/230V,DC output 24V 270W

Specification

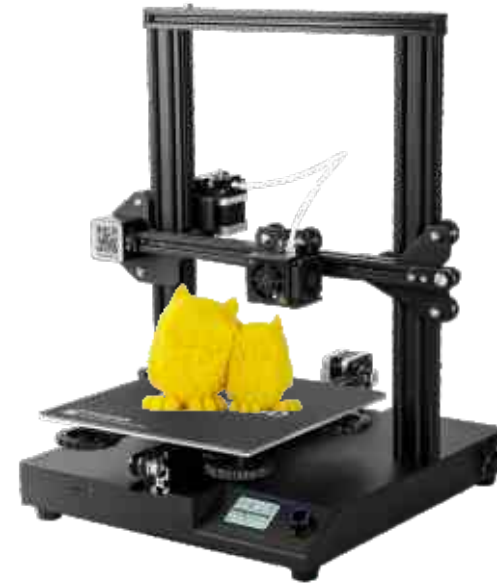
N.W.:	7.8KG	G.W.:	10.2KG
Machine Size:	440*420*475mm	Package Size:	485*475*275mm

Details Display



Features

- BL-TOUCH Auto Leveling Function: BL TOUCH automatic leveling device, 9-point leveling, simplifying the leveling process.
- C-magnetic sticker: Good adhesion, solving the problem of printing edge and more cost effective.
- Resume printing function: Automatically save the printing records after power-off, continue printing after power-on again.
- High quality extruder: Patented technology 1, MK-8 extrusion mechanism, avoids unnecessary plugging or poor spillage.
- High standard structure: Patented technology 2, V-shaped pulleys, running more stable and smoothly with less noise and more wear-resistant.
- Enhanced print stability: The 4040 profile and the Y-axis U-type passive block which use on the Y-axis.
- Meanwell Power supply: Made by the listed company with a history of over 30 years, mature technology ensures better user experience .
- Imported guide tube: Imported blue Teflon tube, ensures filaments feed-in more smoothly.



CR20

Molding Tech:	FDM(Fused Deposition Molding)
Printing Size:	220*220*250mm
Printing Speed:	≤100mm/s
Precision:	±0.1mm
Slice Thickness:	0.1mm-0.4mm
Nozzle Diameter:	Standard 0.4mm,can be in 0.2,0.3mm
Filament:	1.75mm,PLA,ABS,TPU,wood, gradient color, carbon fiber, etc
Bed Temp:	≤100°C
Working Mode:	Online or TF card offline
File Format:	STL,OBJ,AMF
Slice Software:	Cura,Repetier-Host,Simplify 3D
Power Supply:	AC input 115/230V,DC output 24V 270W

Specification

N.W.:	7.58KG	G.W.:	10.1KG
Machine Size:	440*420*485mm	Package Size:	485*485*275mm

Details Display



Features

- Small and portable: It can be lifted with one hand, easy to move while printing area is still great up to 220X220X250mm.
- Large leveling nut: Leveling is more convenient.
- Creality3d V2.1 motherboard: All-upgraded, quality assurance, industrial-grade process, 200 hours of continuous printing without pressure.
- Resume printing while power off : Security protect power supply device with resume printing function, which can realize long time printing.
- Linear pulley system: Patented technology, a V-profile + precision pulley combo, running smoothly and more wear-resistant. Effectively reduce noise.
- Mk8 Extrusion Mechanism: A brand-new patented infrastructure that effectively reduces the risk of plugging and poor spillage and can print almost all consumables on the market.



Ender-3 Pro

Molding Tech:	FDM(Fused Deposition Molding)
Printing Size:	220*220*250mm
Printing Speed:	≤100mm/s
Precision:	±0.1mm
Slice Thickness:	0.1mm-0.4mm
Nozzle Diameter:	Standard 0.4mm,can be in 0.2,0.3mm
Filament:	1.75mm,PLA,ABS,TPU,wood, gradient color, carbon fiber, etc
Bed Temp:	≤100°C
Working Mode:	Online or TF card offline
File Format:	STL,OBJ,AMF
Slice Software:	Cura,Repetier-Host,Simplify 3D
Power Supply:	AC input 115/230V,DC output 24V 270W

Specification

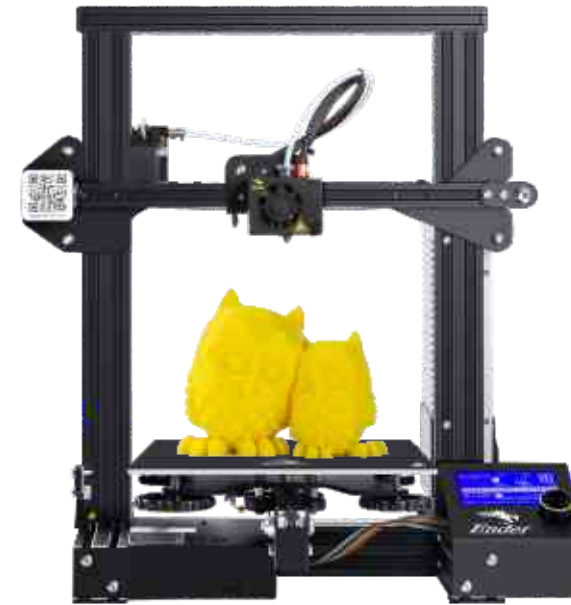
N.W.:	6.98KG	G.W.:	9KG
Machine Size:	440*420*465mm	Package Size:	600*505*175mm

Details Display



Features

- High quality extruder: Patented technology 1, MK8 extrusion mechanism, avoids unnecessary plugging and poor spillage.
- High standard structure: Patented technology 2, V-shaped pulleys, running more stable and smoothly with less noise and more wear-resistant.
- C-magnetic sticker: Good adhesion, solving the problem of printing edge and more cost effective.
- Enhanced print stability: The 4040 profile and the Y-axis U-type passive block which use on the Y-axis, makes it print more stable as well as precise.
- Simple leveling method: Large hand leveling nuts, ergonomic design, easier for you to level the platform.



Ender-3

Molding Tech:	FDM(Fused Deposition Molding)
Printing Size:	220*220*250mm
Printing Speed:	≤100mm/s
Precision:	±0.1mm
Slice Thickness:	0.1mm-0.4mm
Nozzle Diameter:	Standard 0.4mm,can be in 0.2,0.3mm
Filament:	1.75mm,PLA,ABS,TPU,wood, gradient color, carbon fiber, etc
Bed Temp:	≤100°C
Working Mode:	Online or TF card offline
File Format:	STL,OBJ,AMF
Slice Software:	Cura,Repetier-Host,Simplify 3D
Power Supply:	AC input 115/230V,DC output 24V 270W

Specification

N.W.:	6.62KG	G.W.:	8.1KG
Machine Size:	410*420*465mm	Package Size:	530*380*200mm

Details Display



Features

- Split type design: The electronic control host and the mechanical structure are separated, develop your mind, help create a variety of printers at will.
- Shipment of the kit: Solving the problem of large-size transportation, installation takes only 5 minutes.
- Industrial grade circuit board: The technology is mature and stable, and it can work continuously for 200 hours with no pressure.
- Linear pulley system: Patented technology, a V-profile + precision pulley combo, running more smoothly, more wear-resistant. Effectively reduce noise.
- Mk8 Extrusion Mechanism: A brand-new patented infrastructure that effectively reduces the risk of plugging and poor spillage and can print almost all consumables on the market.



Ender-5 Plus

Molding Tech:	FDM(Fused Deposition Molding)
Printing Size:	350*350*400mm
Printing Speed:	≤100mm/s
Precision:	±0.1mm
Slice Thickness:	0.1mm-0.4mm
Nozzle Diameter:	Standard 0.4mm,can be in 0.2,0.3mm
Filament:	1.75mm,PLA,ABS,TPU,wood, gradient color, carbon fiber, etc
Bed Temp:	≤100°C
Working Mode:	Online or TF card offline
File Format:	STL,OBJ,AMF
Slice Software:	Cura,Repetier-Host,Simplify 3D
Power Supply:	AC input 100-240V,DC output 24V 550W

Specification

N.W.:	18.2KG	G.W.:	23.8KG
Machine Size:	632*666*619mm	Package Size:	730*740*310mm

Details Display



Features

- Cubic Design: Cubic design allows adding on enclosure sheets for heat requirements. Integrated frames ensure high-stability and improves overall printing precision
- Great printing size: 350*350*400mm is great for prototyping large-size components and realizing your whimsy
- Dual Z axis: Accurately-manufactured polished rods operate smoothly and precisely.It' s so firm and strong that it can bear a medium-weight person.
- Quick heat-up: Hotbed can reach 100°C within 10 minutes.
- Mean Well Power Supply: Recognized brand outputs stable electric energy
- Resume printing function: Reserve printing construction when a power-outage occurs and continue printing after power coming back.
- Preset BL-Touch: Pre-install BL Touch enables auto bed leveling at one plug-in and several setting clicks.Quickly and precisely fix leveling chores.



Ender-5

Molding Tech:	FDM(Fused Deposition Molding)
Printing Size:	220*220*300mm
Printing Speed:	≤180mm/s, normal printing speed 40-80mm/s
Precision:	±0.1mm
Slice Thickness:	0.1mm-0.4mm
Nozzle Diameter:	Standard 0.4mm,can be in 0.2,0.3mm
Filament:	1.75mm,PLA,ABS,TPU,wood, gradient color, carbon fiber, etc
Bed Temp:	≤100°C
Working Mode:	Online or TF card offline
File Format:	STL,OBJ,AMF
Slice Software:	Cura, Repetier-Host,Simplify 3D
Power Supply:	AC input 100-120V/200-240V ,DC output 24V 270W

Specification

N.W.:	11.8KG	G.W.:	14.2KG
Machine Size:	552*485*510mm	Package Size:	610*570*345mm

Details Display



Features

- C-magnetic sticker: Good adhesion, solving the problem of printing edge and more cost effective.
- More stable printing: The dual Y-axis motion control system drives the high-quality stable output of the two-sided timing belt, effectively avoiding the shock caused by printing.
- Built-in motherboard power supply: The wires are arranged in the machine's control box.
- Resume printing function: Automatically save the print record after power-off, continue printing after power-on.
- Simple leveling method: The large hand-turning nut is ergonomically designed, and the leveling speed is fast, quick and hassle-free.
- Industrial circuit board: High-load safety inspection, Endure extensive repeated tests to ensure stable performance, able to continuous operate for 200 hours with no pressure.



CR-100

Molding Tech:	FDM(Fused Deposition Molding)
Printing Size:	100*100*80mm
Printing Speed:	≤60mm/s
Precision:	±0.1mm
Slice Thickness:	0.1mm-0.4mm
Nozzle Diameter:	Standard 0.4mm,can be in 0.2,0.3mm
Filament:	1.75mm,PLA,TPU,wood, gradient color, carbon fiber, etc
Working Mode:	Online or TF card offline
File Format:	STL,OBJ,AMF
Slice Software:	Cura,Repetier-Host,Simplify 3D
Power Supply:	AC input 100-240V,DC output 12V 50W

Specification

N.W.:	2.8KG	G.W.:	3.9KG
Machine Size:	241*183*255mm	Package Size:	250*230*340mm

Details Display



Features

- Exquisite appearance: Adorable look with security gadgets, which is more suitable for your kids.
- Intelligent operation: Touch screen design and one-button printing function, simple and practical.
- Easy to carry: A portable 3D printer.
- Energy-saving: Environmental friendly and low energy consumption.
- Cost effective: Adorable and Affordable.
- Brand new platform: Magnetic self-adhesive platform, more stable while you printing.
- Easy to Level: Auxiliary leveling, more chance for your child to develop their minds.
- Silent printing: Germany imported bearings, low-decibel printing, stable and quiet.



LD-002

Molding Tech:	LCD
Printing Size:	120*70*120mm
Prxel size:	0.05mm
Layer Thickness:	0.02mm-0.1mm
Printing speed:	20mm/hour
Working Mode:	Online, USB, Wi-Fi
File Format:	STL
Slice Software:	3D Creator Slicer
Power Supply:	AC input 100-240V,DC output 12V 90W

Specification

N.W.:	7.4KG	G.W.:	10KG
Machine Size:	202*220*365mm	Package Size:	365*310*465mm

Details Display



Features

- Easier to clean the trough: Quickly remove the residues inside the trough and improve the printing quality. Simply leveling , one leveling fits for all time.
- High-efficiency leveling: Exquisite and compact, simple but beautiful, good protection from light with great sealing.
- Exquisite appearance: Able to connect multiple computers into one network and share the printer with one button, totally offline printing, no need to use USB to transfer or control the printer.
- Intelligent printing: 3.5-inch touch screen system, three-dimensional model display , more intuitive to find or delete print files, and support real-time preview printing.
- Simple and high-speed slicing: Complicated models can be formed at one time, accurate to micron, which is four times than that of SLA.



DP-002

Molding Tech:	DLP
Printing Size:	89*56*170mm
Precision:	0.07mm
Layer Thickness:	0.02mm-0.1mm
Printing speed:	2-4s/layer
Working Mode:	Online or offline
File Format:	STL
Slice Software:	DLP Slicing software
Power Supply:	AC input 115/230V,DC output 12V 230W

Specification

N.W.:	29KG	G.W.:	35KG
Machine Size:	320*406*780mm	Package Size:	565*435*897mm

Details Display



Features

- User-friendly operation interface: Only needs three steps to print, easy to learn.
- Integrated curing process: Integrated 3D printing and post-curing process, rapid secondary curing after cleaning, convenient and practical.
- Light intensity calibration and compensation: The unique compensation technology effectively avoids the printing failure caused by light unevenness and light source failure, greatly improving the printing success rate.
- Aluminum alloy molding trough: Multiple protection and separation technologies greatly increase the working life of trough, which is 3-5 times of the life of ordinary trough.
- High-precision transmission components: High-quality achievement of high precision, printing tolerance is up to 20-50 microns.



CR-5S

Molding Tech:	FDM(Fused Deposition Molding)
Printing Size:	300*225*320mm
Printing Speed:	≤100mm/s
Precision:	±0.1mm
Slice Thickness:	0.1mm-0.4mm
Nozzle Diameter:	Standard 0.4mm,can be in 0.2,0.3mm
Filament:	1.75mm,PLA,ABS,TPU,wood, gradient color, carbon fiber, etc
Bed Temp:	≤100°C
Working Mode:	Online or SD card offline
File Format:	STL,obj,amf
Slice Software:	Cura,Repetier-Host,Simplify 3D
Power Supply:	AC input 115/230V,DC output 24V 230W

Specification

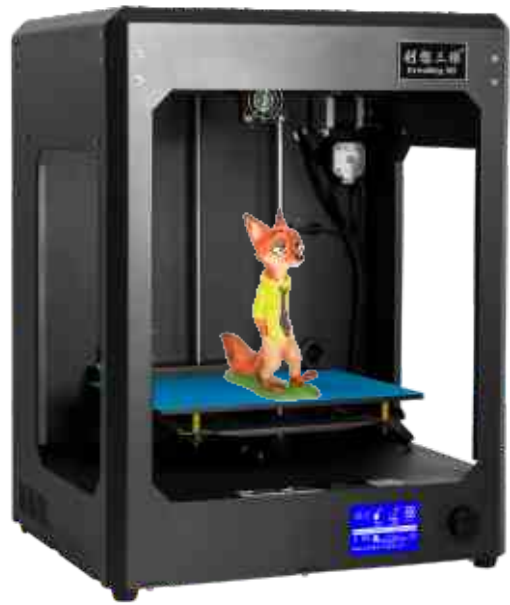
N.W.:	23KG	G.W.:	32.5KG
Machine Size:	450*400*600mm	Package Size:	510*450*670mm

Details Display



Features

- Dual color 3D printing, one nozzle with two inlets, a separate single nozzle for different color printing.
- Patented nozzle design: Patented nozzle, precision alloy, filaments come out evenly.
- LED energy-saving lamps: Easier to check the printing results.
- Far-end feeding: Reduce nozzle weight and effectively increase printing speed.
- Silicone heated bed: 6mm ultra-thick aluminum working platform, no need to worry about the platform leveling problem, fast and safe heat up , effectively preventing the model from curling.
- Filament sensor: Automatically stop printing when running out of filaments, ensuring the model can be print out smoothly.



CR-5

Molding Tech:	FDM(Fused Deposition Molding)
Printing Size:	300*225*320mm
Printing Speed:	≤100mm/s
Precision:	±0.1mm
Slice Thickness:	0.1mm-0.4mm
Nozzle Diameter:	Standard 0.4mm,can be in 0.2,0.3mm
Filament:	1.75mm,PLA,ABS,TPU,wood, gradient color, carbon fiber, etc
Bed Temp:	≤100°C
Working Mode:	Online or SD card offline
File Format:	STL,OBJ,AMF
Slice Software:	Cura,Repetier-Host,Simplify 3D
Power Supply:	AC input 115/230V,DC output 24V 230W

Specification

N.W.:	23KG	G.W.:	32.5KG
Machine Size:	450*400*600mm	Package Size:	510*450*670mm

Details Display



Features

- Large build size: Offer you more opportunity to create and image the things you need while ensuring accuracy and quality.
- Far-end feeding: Reduce nozzle weight, effectively increase the printing speed.
- Silicone hot bed: More quick and safe heated bed, effectively prevent the print to warp.
- Thicker aluminum platform:10mm thick aluminum working platform, pre-calibrated before selling.
- High-quality hardware: Imported originals are used in many places, with lower noise and perfect printing.
- High-quality chassis: The combination of 2mm steel plate and advanced paint technology, a perfect presentation of quality and beauty.



CR-2020

Molding Tech:	FDM(Fused Deposition Molding)
Printing Size:	200*200*200mm
Printing Speed:	≤100mm/s
Precision:	±0.1mm
Slice Thickness:	0.1mm-0.4mm
Nozzle Diameter:	Standard 0.4mm,can be in 0.2,0.3mm
Filament:	1.75mm,PLA,ABS,TPU,wood, gradient color, carbon fiber, etc
Bed Temp:	≤100°C
Working Mode:	Online or SD card offline
File Format:	STL,OBJ,AMF
Slice Software:	Cura,Repetier-Host,Simplify 3D
Power Supply:	AC input 115/230V,DC output 24V 200W

Specification

N.W.:	20.6KG	G.W.:	24.5KG
Machine Size:	370*380*430mm	Package Size:	482*482*595mm

Details Display



Features

- High-precision extruder module: Extrusion module mechanism using wire cutting and other mold processing technology is accurate.
- Unique circuit system: Support functions such as automatic shutdown and broken material detection. It can work continuously for 200 hours with no pressure.
- Automatic shutdown: Automatic shutdown after printing is complete, not only saving electricity and environmental protection, but also reducing the sound and light pollution.
- Short-range feeding: More accurate controll, stronger compatibility of consumables, higher printing accuracy.
- High-quality hardware: Imported originals in many places, lower noise, and perfect printing.
- High-quality chassis: The combination of 2mm steel plate and advanced paint technology, a perfect presentation of quality and beauty.

We have various customized industrial 3D printer. OEM & ODM services are also available.



CR-3040S

Printing Size 300*300*400mm
Package Size: 535*555*880mm
G.W.: 57.3KG



CR-3040

Printing Size 300*300*400mm
Package Size: 530*530*740mm
G.W.: 45KG



CR-4040

Printing Size 400*400*400mm
Package Size: 640*640*740mm
G.W.: 56KG



CR-5060

Printing Size 500*500*600mm
Package Size: 820*820*1160mm
G.W.: 126KG



CR-5080

Printing Size 500*500*800mm
Package Size: 820*820*1460mm
G.W.: 156KG

Spare parts



Carborundum glass platform

Package Size:293 X 281 X 36mm
G.W.:707g
Applicable models:
Ender-3, Ender-3S, Ender-3 pro



Auto leveling kit

Package Size:174X143X60mm
G.W.:341g
Applicable models:CR-10, CR-10S,
CR-10S4, CR-10S5, CR-10MINI



BL touch Auto leveling kit

Package Size:135X115X45mm
G.W.: 78g
Applicable models: CR20 Pro



Nozzle kit

Package Size:153X141X56mm
G.W.:149g
Applicable models:CR-10,CR-10S



Nozzle quick change kit

Package Size:153X141X56mm
G.W.:203g
Applicable models:CR-10, CR-10S,
CR-10S4, CR-10S5, CR-10MINI



Full nozzle kit

Package Size:220X105X75mm
G.W.:264g
Applicable models:CR-10, CR-10S



Gradient



TPU



Carbon



PLA



ABS



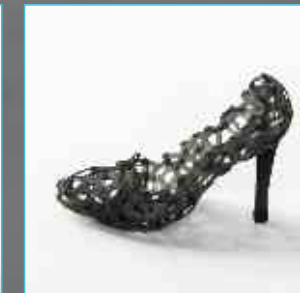
WOOD

Applied fields

Casting mold, scientific research, medical customization, maintenance and modification, Innovative education, teaching AIDS, advertising signs, jewelry, footwear and apparel, heritage protection, toys, gift customization



Architectural design



Footwear&apparel



Luminate design



Industrial board



Artistic creation



Film and television props



Jewelry design



Dental design