

Push-Pull Connectors

HR10 Series



■ Overview

The HR10 series connectors are push-pull coupling type micro-connectors. They have been developed in response to customers' needs for miniaturization, high density, and easy handling. The HR10 series connectors offer light weight and assure high reliability and durability as well as easy "push-pull" operation.

You may apply the HR10 series connectors to all kinds of small-sized electronic equipment requiring high reliability. However, these simple but refined connectors are most suitable for portable electronic equipment which requires good appearance.

■ Features

1. "A LITTLE GIANT"

The most compact HR10 series is as slender as a cigarette but it fits every application with well-balanced, simplified layout in limited space.

2. Easy "PUSH-PULL" OPERATION

One touch "push-pull" coupling mechanism assures easy and quick connecting and disconnecting. You can couple it accurately just by pushing any part of the connector housing.

3. Polarization

Five-key system permits only one way of coupling so that you can find right position to connect even when blind mating.

4. Protection of connection pin

A connector pin is located to avoid any damage which may be caused when blind mating.

5. High density

The space-saving "push-pull" mechanism facilitates multi-installation of connectors.

6. Easy wiring and mounting

No use of screws makes wiring and mounting easier.

7. Simple and refined appearance

Simple and well designed connectors with matte finish enhance the appearance of the equipment.

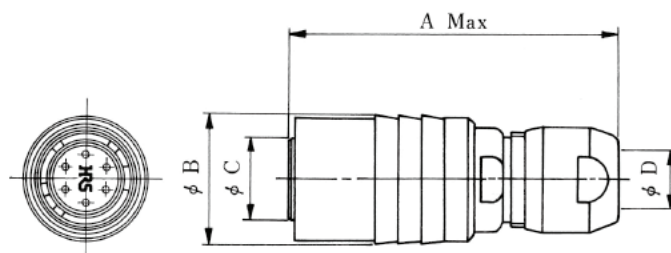
Materials

| Part | Material | Finish |
|-----------------|-----------------------------|-----------------------------|
| Shell | Zinc alloy and Brass | Satin-finished nickel plate |
| Insulator | Polyamide / PBT | (Blue or Black) |
| Male terminal | Brass / Bronze | Silver or Gold plating |
| Female terminal | Beryllium / Phosphor bronze | Silver or Gold plating |

Ordering information

HR10 A – 7 P – 4 P A (**)
 ① ② ③ ④ ⑤ ⑥ ⑦ ⑧

| | |
|---|---|
| ①Series name:HR10 Series | ④Shell type P:Plug J:Jack R:Receptacle |
| ②Type A:Low-cost model G:Shielded E:Built-in capacitor B:Coaxial terminal D:Connector sleeve rotation inhibited | ⑤Number of contacts |
| | ⑥Type of terminal P:Male terminal S:Female terminal |
| ③Shell size: Plug mating part outside diameter in mm | ⑦Terminal form C:Crimp connection system |
| | ⑧Other specifications:2 numerical digits will be added when there is a specifications change other than shown in positions ① to ⑦ |

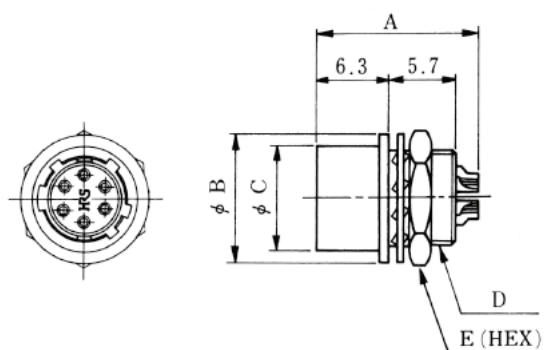
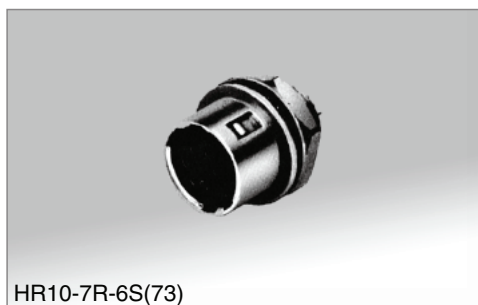
HR10 type**■Plug**

(An example in shape)

Unit : mm



| HRS No. | Part No. | No.of pins | A | φB | φC | φD | Weight |
|---------------|------------------|------------|------|----|-----|-----|--------|
| 110-0021-6-73 | HR10-7P-4P(73) | 4 | 28.5 | 11 | 7 | 5.2 | 8g |
| 110-0022-9-73 | HR10-7P-4S(73) | 4 | 28.5 | 11 | 7 | 5.2 | 8g |
| 110-0023-1-73 | HR10-7P-6P(73) | 6 | 28.5 | 11 | 7 | 5.2 | 8g |
| 110-0024-4-73 | HR10-7P-6S(73) | 6 | 28.5 | 11 | 7 | 5.2 | 8g |
| 110-0025-7-73 | HR10-10P-12P(73) | 12 | 32.5 | 14 | 9.5 | 7.2 | 15g |
| 110-0026-0-73 | HR10-10P-12S(73) | 12 | 32.5 | 14 | 9.5 | 7.2 | 15g |

■Receptacle

(An example in shape)

Unit : mm



| HRS No. | Part No. | No.of pins | A | φB | φC | D | E | Weight |
|---------------|------------------|------------|----|----|------|----------|----|--------|
| 110-0031-0-73 | HR10-7R-4S(73) | 4 | 14 | 11 | 8.85 | M8×0.5 | 10 | 3.5g |
| 110-0032-2-73 | HR10-7R-4P(73) | 4 | 14 | 11 | 8.85 | M8×0.5 | 10 | 3.5g |
| 110-0033-5-73 | HR10-7R-6S(73) | 6 | 14 | 11 | 8.85 | M8×0.5 | 10 | 3.5g |
| 110-0034-8-73 | HR10-7R-6P(73) | 6 | 14 | 11 | 8.85 | M8×0.5 | 10 | 3.5g |
| 110-0035-0-73 | HR10-10R-12S(73) | 12 | 16 | 14 | 11.9 | M11×0.75 | 13 | 6g |
| 110-0036-3-73 | HR10-10R-12P(73) | 12 | 16 | 14 | 11.9 | M11×0.75 | 13 | 6g |

Remarks : For mounting holes, see page 198.