

Power Relay RM 8

- 2 pole 25 A, 2 CO contacts
- DC- or AC-coil
- Mechanical indicator
- Push-to-test-button
- Chassis- or DIN-rail mount
- Versions with AgNi90/10 contact material: RoHS compliant (Directive 2002/95/EC)

Applications

Cleaning equipment, heating and cooling equipment



F0165-A

Approvals

VDE REG.-Nr. 40003144, **CE** us E214025
Technical data of approved types on request

Contact data	RM8
Contact configuration	2 CO contacts
Contact set	single contact
Type of interruption	micro disconnection
Rated current	25 A
Rated voltage / max.switching voltage AC	400 VAC
Maximum breaking capacity AC	6000 VA
Limiting making capacity, max 20 ms	60 A
Contact material	AgNi90/10, AgCdO
Mechanical endurance	10x10 ⁶ cycles
Rated frequency of operation with / without load	16/100 min ⁻¹

Contact ratings

Type	Load	Cycles
RM80	25 A, 415 VAC, 70°C, UL	10x10 ³
RM80	25 A, 250 VAC, cosφ=1, 35°C, VDE	10x10 ³
RM80	25 A, 240 VAC, 1-phase, per pole, general purpose, UL	6x10 ³

Coil data

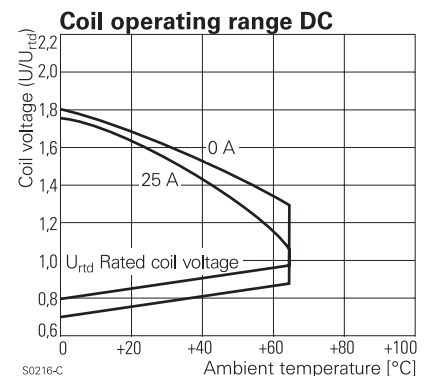
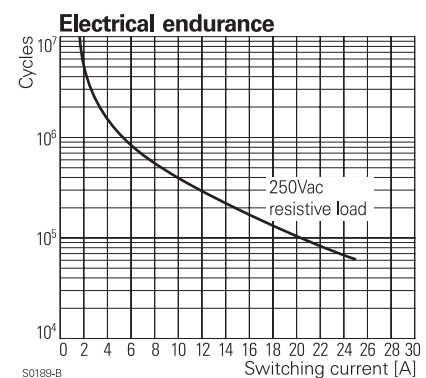
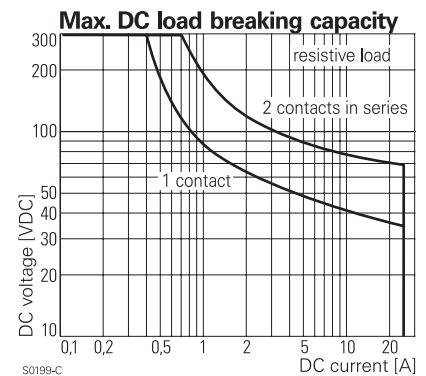
Rated coil voltage range	DC coil	6...220 VDC
	AC coil	6...400 VAC
Coil power	DC coil	1.2 W
	AC coil	2.8 VA

Coil versions, DC-coil

Coil code	STD	LED	PD*	LED+	PD*	Rated voltage VDC	Operate voltage VDC	Release voltage VDC	Coil resistance Ohm	Rated coil power W
006	L06	0A6	LA6			6	4.5	0.6	32±10%	1.1
012	L12	0B2	LB2			12	9.0	1.2	110±10%	1.3
024	L24	0C4	LC4			24	18.0	2.4	475±10%	1.2
048	L48	0E8	LE8			48	36.0	4.8	2000±10%	1.2
060	L60	0G0	LG0			60	45.0	6.0	2850±10%	1.3
110	M10	1B0	MB0			110	82.5	11.0	10000±12%	1.2
221	N21	2C1	NC1			220	165.0	22.0	40000±15%	1.2

All figures are given for coil without preenergization, at ambient temperature +23°C

*) Protection diode PD; standard polarity: +A1 / -A2



Power Relay RM 8 (Continued)

Coil versions, AC-coil 50/60 Hz

Coil code	LED	Rated voltage	Operate voltage 50/60Hz	Release voltage 50/60Hz	Coil resistance	Rated coil power 50/60Hz
		VAC	VAC	VAC	Ohm	VA
506	R06	6	4.8	2.4	$4.7 \pm 10\%$	2.86/2.36
512	R12	12	9.6	4.8	$19.5 \pm 10\%$	2.71/2.27
524	R24	24	19.2	9.6	$80 \pm 10\%$	2.62/2.00
548	R48	48	38.4	19.2	$320 \pm 10\%$	2.60/2.17
560	R60	60	48.0	24.0	$500 \pm 10\%$	2.62/2.20
615	S15	115	92.0	46.0	$1850 \pm 10\%$	2.65/2.22
730	T30	230	184.0	92.0	$7500 \pm 10\%$	2.69/2.26
900	V00	400	320.0	160.0	$23500 \pm 15\%$	2.61/2.20

All figures are given for coil without preenergization, at ambient temperature +23°C

Insulation

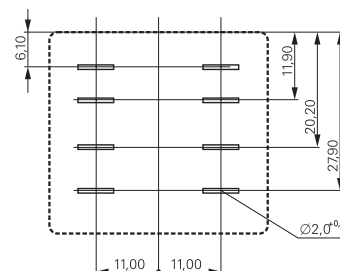
Dielectric strength coil-contact circuit	2500 V _{rms}
open contact circuit	1500 V _{rms}
adjacent contact circuits	4000 V _{rms}
Clearance / creepage coil-contact circuit	$\geq 4/14.9$ mm
adjacent contact circuits	$\geq 15.3/15.3$ mm
Material group of insulation parts	\geq IIIa
Insulation to IEC 60664-1	
Type of insulation coil-contact circuit	basic
open contact circuit	functional
adjacent contact circuits	basic
Rated insulation voltage	250 V
Pollution degree	3
Rated voltage system	240/400 V
Overvoltage category	III

Other data

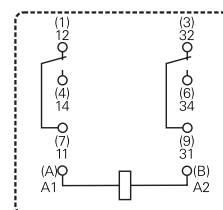
RoHS - Directive 2002/95/EC	
Versions with AgNi90/10 contacts:	compliant
Ambient temperature range DC coil	-45...+65°C
AC coil	-45...+40°C
Operate- / release time	15/15 ms
Bounce time NO / NC contact	3 ms
Vibration resistance (function) NO / NC contact	10/5 g, 30...150 Hz
Category of protection	RTI - dust protected
Relay weight	81 g
Packaging unit	10/25 pcs

Terminal assignment

Bottom view



S0269-AG

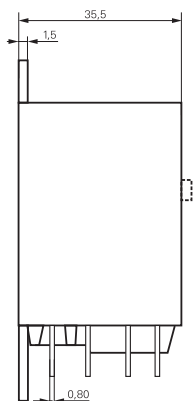
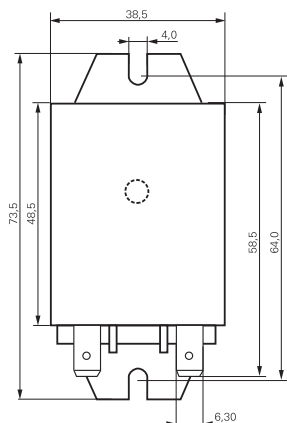


S0269-AD

Power Relay RM 8 (Continued)

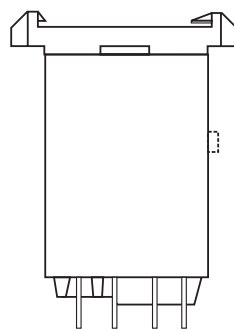
Dimensions

Cover with mounting brackets, 6.3 mm quick connect terminals



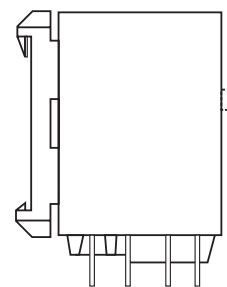
S0298-BC

Cover with DIN-snap-on attachment
horizontal



S0298-BD

vertical



S0298-BE

Product key

Type

Contact configuration

8 2 CO contacts, 25 A

Version

0 AgCdO, without test button

3 AgCdO, with test button

2 AgNi 90/10, without test button

7 AgNi 90/10, with test button

Enclosure

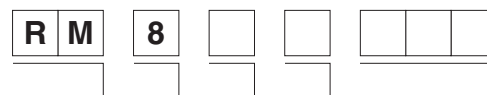
5 cover with mounting brackets, 6.3 mm quick connect terminals

8 cover with DIN-snap-on attachment, horizontal, 6.3 mm quick connect terminals

9 cover with DIN-snap-on attachment, vertical, 6.3 mm quick connect terminals

Coil

Coil code: please refer to coil versions table, preferred types in bold print



Product key	Contacts	Version	Enclosure	Coil	Coil	Part number
RM805024	2 CO contacts 25 A	without test button	mounting brackets quick c. 6.3 mm	DC-coil	24 VDC	2-1393844-7
RM805524				AC-coil	24 VAC	2-1393147-9
RM805615					115 VAC	3-1393147-1
RM805730					230 VAC	3-1393147-3
RM808024					24 VDC	2-1393844-9
RM808524			DIN-snap-on horizontal	DC-coil	24 VDC	3-1393147-3
RM808730				AC-coil	24 VAC	3-1393147-7
RM809024			DIN-snap-on vertical	DC-coil	230 VAC	5-1393149-7
RM809615					24 VDC	5-1393149-8
RM809730					115 VAC	3-1393147-8
RM835024		with test button	mounting brackets quick c. 6.3 mm	AC-coil	230 VAC	3-1393147-9
RM835524					24 VDC	4-1393147-1
RM835615					24 VAC	4-1393147-3
RM835730					115 VAC	4-1393147-4
RM838024					230 VAC	4-1393147-6
RM838524			DIN-snap-on horizontal	DC-coil	24 VDC	4-1393147-8
RM838730				AC-coil	24 VAC	5-1393147-0
RM839024			DIN-snap-on vertical	DC-coil	230 VAC	5-1393147-1
RM839524					24 VDC	5-1393147-4
RM839730					24 VAC	5-1393147-5
				AC-coil	230 VAC	5-1393147-6