



(2,54 mm) .100"

HW-14-08-G-S-300-100

DW-11-20-T-D-825

DW, EW, ZW, HW SERIES

FLEXIBLE .025" SQ BOARD STACKERS

Mates with:

SSW, SSQ, ESW, ESQ,
CES, SLW, BSW, BCS,
SSM, IDSS, IDSD, HLE,
PHF, SMSD, SMSS

SPECIFICATIONS

For complete specifications
see www.samtec.com?DW,
www.samtec.com?EW,
www.samtec.com?ZW or
www.samtec.com?HW-TH

Insulator Material:

DW, EW, ZW: Black Glass
Filled Polyester

HW: Natural Liquid
Crystal Polymer

Terminal Material:

Phosphor Bronze

Plating:

Au or Sn over
50μ" (1,27 μm) Ni

Operating Temp Range:

-55°C to +125°C with Gold

-55°C to +105°C with Tin

RoHS Compliant:

Yes

Lead-Free Solderable:

DW, EW, ZW: Wave Only

HW: Yes

RECOGNITIONS

For complete scope of
recognitions see
www.samtec.com/quality



FILE NO. E111594

FILE NO. 090071_0_000

ALSO AVAILABLE (MOQ Required)

- Other platings
- Contact Samtec.

Note: For added mechanical
stability, Samtec recommends
mechanical board spacers be
used in applications with gold or
selective gold plated connectors.
Contact ipg@samtec.com for
more information.

Note: This Series is
non-standard, non-returnable.

TYPE STRIP

NO. PINS PER ROW

LEAD STYLE

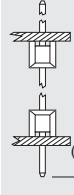
PLATING OPTION

ROW OPTION

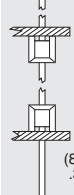
STACKER HEIGHT

OTHER OPTIONS

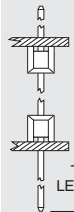
DW
= (2,79 mm)
.110" Tail



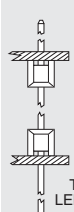
EW
= (8,38 mm)
.330" Tail



ZW
= Custom Tail



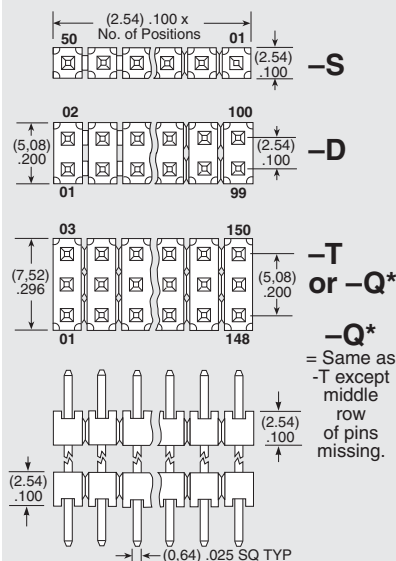
HW
= High Temp
Custom Tail



Specify LEAD STYLE from chart

LEAD STYLE	OAL
-07	(10,92) .430
-08	(13,46) .530
-09	(18,54) .730
-10	(21,08) .830
-11	(23,62) .930
-12	(26,16) 1.030
-13	(31,24) 1.230
-14	(36,32) 1.430
-15	(16,00) .630
-16	(11,30) .445
-17	(12,19) .480
-19	(33,78) 1.330
-20	(28,70) 1.130

01 thru 50



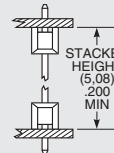
-S
= Single
Row

-D
= Double
Row

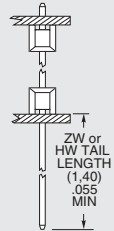
-T
= Triple
Row

-Q
= Double
Row .200"
(5,08 mm)
row space

-“XXX”
= Stacker
Height



-“XXX”
= ZW or HW
Tail Length



-F
= Gold flash on contact,
Matte Tin on tail

-L
= 10μ" (0,25 μm) Gold on contact
area of longer tail,
Matte Tin on tail

-G
= 10μ" (0,25 μm) Gold on contact
area of longer tail,
Gold flash on balance

-T
= Matte Tin

-LL
= Locking
Lead
(Shortest
dimension
between the
tail and the
post is the
end that will
be crimped.
Available
on tails from
(2,29 mm)
.090" to
(7,87 mm)
.310" only.)
Single row, 01
& 02 positions
& -Q row not
available

-“XXX”
= Polarized

Specify omitted
pin position

